



Redevelopment of West Hertfordshire Hospitals

15 November 2022



Overview

1. Our plan and clinical model
2. Current state
3. Funding progress update
4. Design approach
5. Next Steps





Driving Innovation

New diagnostics facilities heading to St Albans and Hemel Hempstead . . .



Outstanding care of end-of-life patients at West Herts . . .



Curtain opens on another milestone in theatre transformation . . .



Hospital trust's virtual hospital model praised by senior health leaders . . .



New multi-storey car park opens at Watford General Hospital . . .



Robots usher in new surgical era and transform care at West Herts . . .



Watford nurse providing a lifeline for unpaid carers wins top accolade . . .



We are a teaching hospital – excellent medical education recognised by UCL . . .



We have moved out of special measures and are proud to be innovation leaders



Our Plan

Better Buildings

We need new and improved hospital facilities urgently – our buildings are too old, too cramped and too unreliable to enable us to deliver the best patient care and patient experience.

Our new buildings will provide sustainability – financially, clinically and environmentally

Better Care

We need to deliver 21st century care from a 21st century hospital to meet changing population needs and improve patient outcomes.

Building on our track record of innovation, we will continuously strive for care excellence and improvement, rather than just move current services into new buildings

Innovation-driven

We need to be an innovation-driven, data driven, digitally enabled hospital that is fully integrated with our local health and care system.

New technology will help us deliver the best possible evidence-based care when needed, while enabling people to stay well and supported within their own home



Our Plan – clinical model

Watford General

Emergency and specialist care

- Same day emergency care
- Acute inpatient care
- Women's & Children's services
- Complex / emergency surgery
- Complex diagnostics

Also:

- Urgent care
- Routine outpatient clinics
- Some maternity services

Hemel Hempstead

Planned medical care

- Older people's care
- Long-term conditions
- One stop clinics
- New and upgraded imaging (DEXA, MRI, CT)

Also:

- Urgent care
- Routine outpatient clinics
- Some maternity services

St Albans City

Planned surgery

- Expanded range and volume
- Rapid diagnostics
- One stop clinics
- Cancer support services
- Fluoroscopy, MRI, CT

Also:

- Urgent care
- Routine outpatient clinics
- Some maternity services

Following extensive engagement over many years, our clinical model is agreed



Current State of Watford General

- *increasingly poor environment in the hospital where we see the largest volume of patients who are the sickest*

- 1. Patients experience delays and deserve a more pleasant environment
- 2. Staff are not proud of where they work
- 3. Our building is too cramped and unreliable
- 4. Recurrent water leaks, subsidence/ sinkholes, lift failures ..
- 5. Work to meet standards = ££+ - especially in an aging and failing building
- 6. Reactive estates call-outs - 1,000 per month
- 7. Water safety costs are high
- 8. Diverting time and money to keep our sites in good order means less time and money for patient care



St Albans and Hemel Hempstead hospitals

These two hospitals are in better shape but will benefit from some rebuild and refurbishment

St Albans City Hospital to receive £13m for phase 1 of a community diagnostic centre

- reconfiguration and refurbishment of the Runcie Day Unit building
- to include new MRI and CT scanners to supplement the existing
- phase 1 due to open in 2024
- funding for phase 2 tbc - new two storey building linked to phase 1
- will include x-ray, ultrasound, SPECT scanner and existing pathology services

An integrated urgent care hub opened last month at St Albans City Hospital

Diagnostics plans include new imaging facilities at Hemel Hempstead Hospital

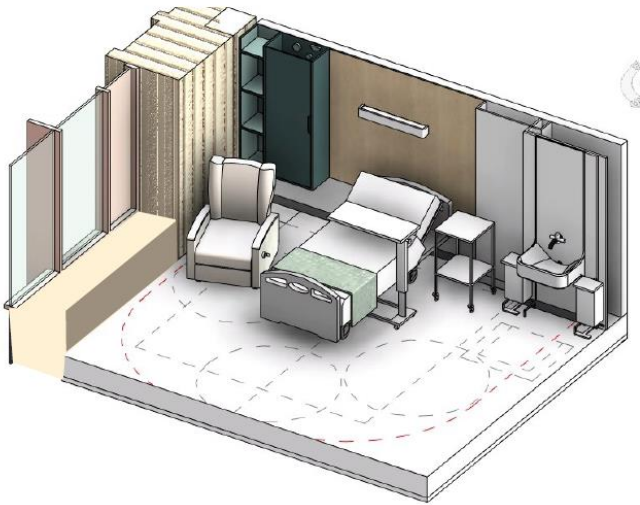


Funding progress update

- New Hospital Programme has been slower than expected
- We are stating our need for funding more strongly than ever
- PM has been pressed for answers by our MPs
- We have hosted many visits from senior stakeholders
- Clarifying standardisation, scale, numbers of beds, expansion opportunity
- We are securing investment from other avenues whilst we await NHP key funding – community diagnostics at St Albans and Hemel Hempstead



Design Approach – Repeatable Rooms



**70% of patients will have their own,
single rooms**



<https://bim.bdp.net/London/panos/WatfordHospital04a>



QR code takes you to a virtual single patient room





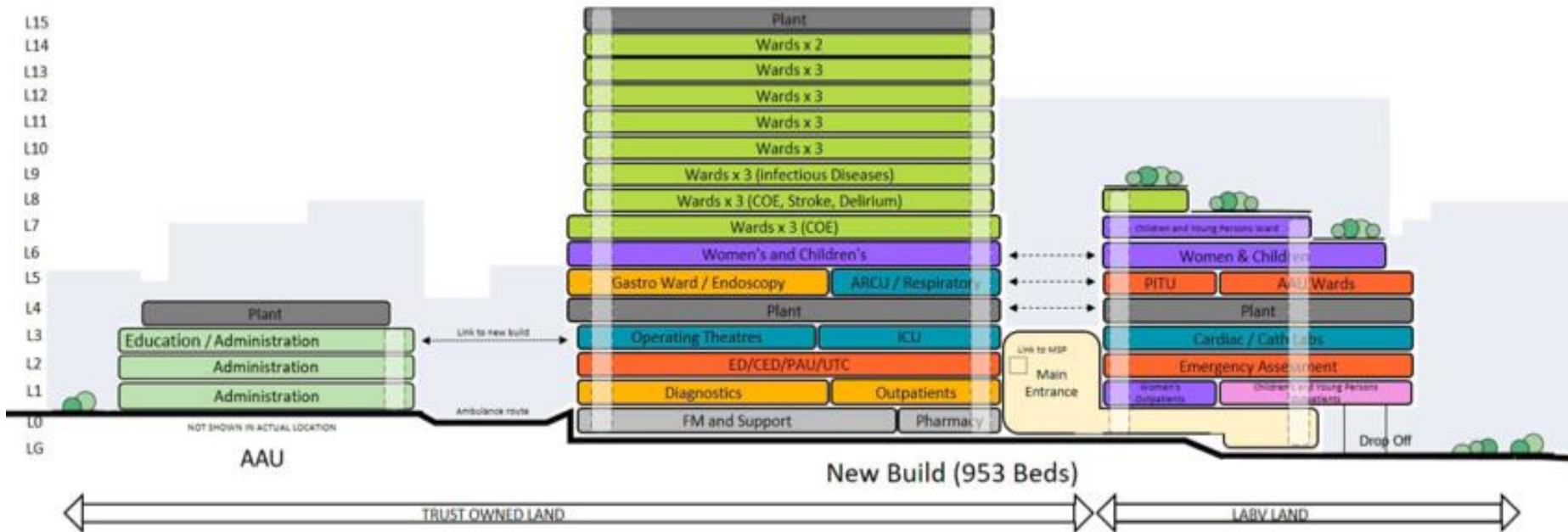
Design Approach – Watford Overview



A new hospital at Watford is needed urgently – extensive work has demonstrated that it is viable to build on land next to the existing hospital



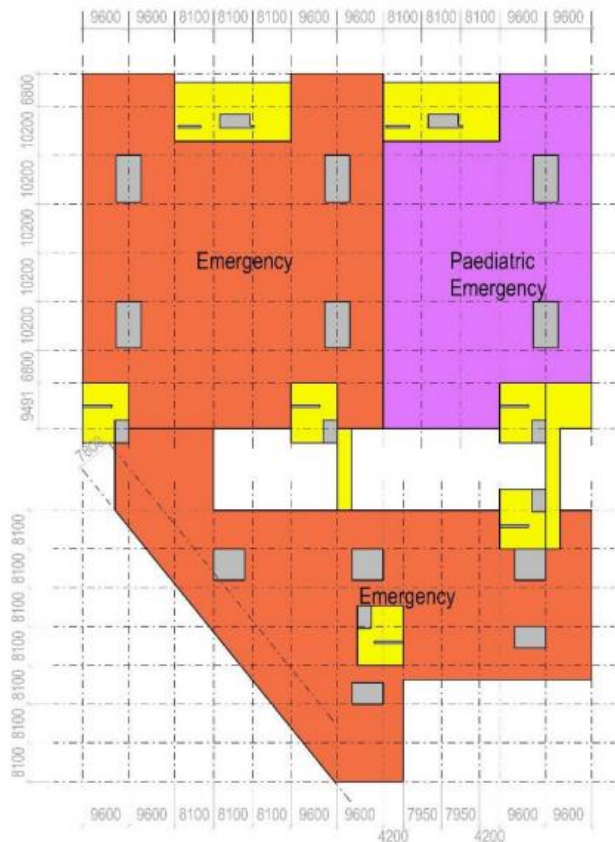
Design Approach – Clinical Adjacencies



The future of our services and buildings has been planned with clinicians around the table - every step of the way

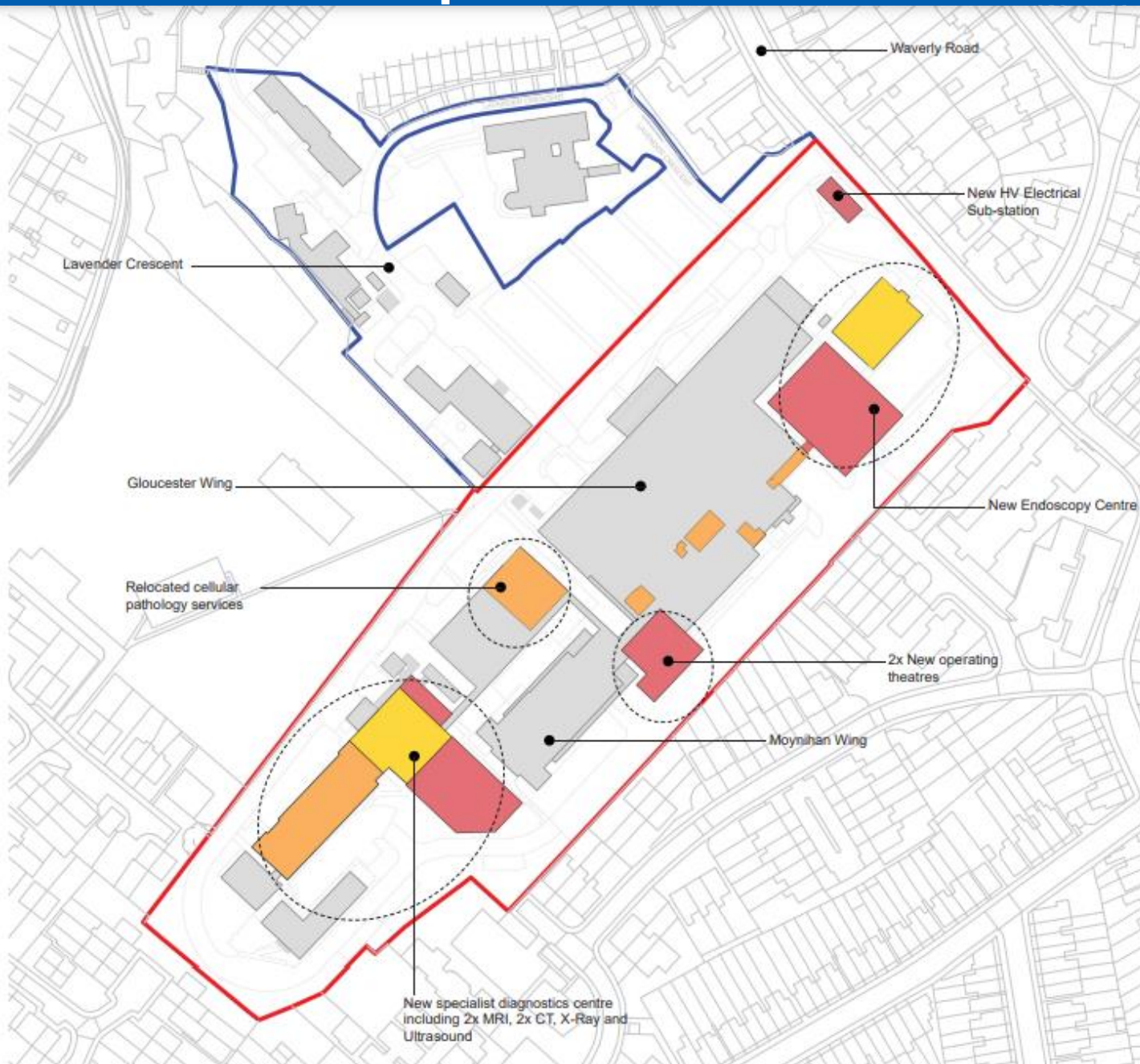


Draft plans for emergency department Proposed 7,500 m² compared to current 4,200 m²





St Albans Hospital Plan





Hemel Hempstead Hospital plan





Next Steps

Immediate Priorities:

- Deliver community diagnostics scheme
- Further design work for all sites
- System transformation
- OBC approval



Questions?





Subscribe to our newsletter, **Blueprint**



Our monthly newsletter **Blueprint** is designed to keep local residents, patients and our health and social care partners up-to-date on our hospital redevelopment plans as well as news from across the trust.

If you would like to sign up to the newsletter, please email westherts.redevelopment@nhs.net

You can view previous editions of the newsletter on our website: <https://www.westhertshospitals.nhs.uk/about/redevelopment/furtherinformation.asp>



Thank you

westherts.redevelopment@nhs.net

Find us online @WestHertsNHS



www.westhertshospitals.nhs.uk