



# Bringing our plans to life

# Hemel Hempstead Hospital

August 2022



# Welcome

Thank you for joining us

- » housekeeping

Today's briefing

- » our vision
- » our clinical model

Questions

- » please ask questions when each speaker is finished

Tour

- » 30-40 minute tour
- » feel free to ask questions on route



## Your presenters today



**Clare Parker**  
Chief Strategy  
Officer



**Dr Sundeep Bhalara**  
Consultant  
Rheumatologist and  
clinical director for  
specialties medicine



**Louise Halfpenny**  
Director of  
Communications



## Modern hospital care is changing

- hospital care is about more than beds and buildings – it's about how we organise care around our patients
- national and international best practice recommends separating planned and emergency care
- we work with system partners to avoid hospital admission – and – if patients are admitted, to reduce their length of stay
- digital technology means that we can safely monitor patients in their own homes, saving hospital visits and promoting independence
- modern booking systems and better ways of working put the patient in control of their own healthcare – making it personalised
- treatment pathways are developed on evidence-based care and standardised methods which drives up quality and clinical outcomes



# How Hemel Hempstead fits in our plans for three networked hospitals providing specialist, emergency, urgent & routine care

## Hemel Hempstead

### Planned medical care

- older people's care and long term conditions
- one stop clinics
- new and upgraded diagnostics: DEXA, MRI, CT

Also:

- urgent care
- routine outpatient clinics
- some maternity services

## St Albans City

### Planned surgery

- expanded range and volume
- rapid diagnostics
- one stop clinics
- cancer support services
- fluoroscopy, MRI, CT
- lower risk of cancellations

Also:

- urgent care hub
- routine outpatient clinics
- some maternity services

## Watford General

### Emergency and specialist care

- 'same day' emergency care
- complex diagnostics
- women's & children's services
- new inpatient accommodation with high ratio of single rooms

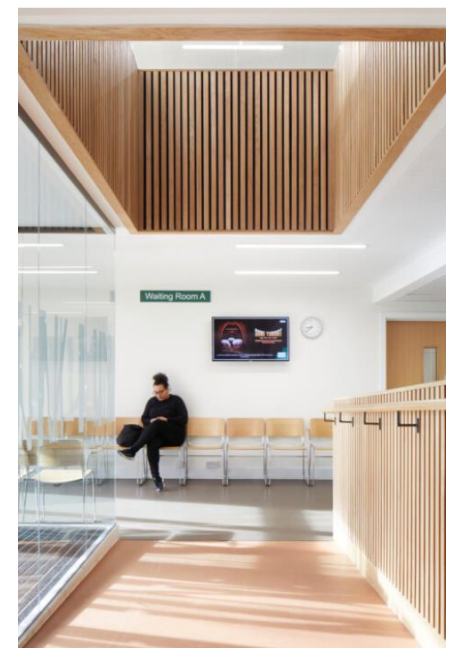
Also:

- urgent care
- routine outpatient clinics



# Plans for Hemel Hempstead Hospital

- plays a key role in our confirmed model
- planned medical care and services for patients who are elderly or who have long-term conditions
- ethos of holistic and ‘anticipatory’ care
- wide range of outpatient care and urgent care for many (approx. 88,000 outpatient appts and 43,000 attend UTC)
- approximately 56,000 diagnostic tests
- being part of a national funding programme may result in changes to plans beyond our control
- we are planning for refurbishment throughout and new extension for diagnostics
- rationalisation of overall site with potential to release land for regeneration – health or housing








## Plans for Hemel Hempstead Hospital (continued)

- one-stop clinics - consultant appointment, diagnostics, treatment all in the same visit
- input of multidisciplinary teams to deliver the 'one stop' model of care
- provide better and faster diagnosis; MRI, CT and DEXA
- expand outpatient services for paediatrics, respiratory, cardiology and dermatology
- clinical hub for specialist diabetes services providing our main base for outpatient specialist diabetes care

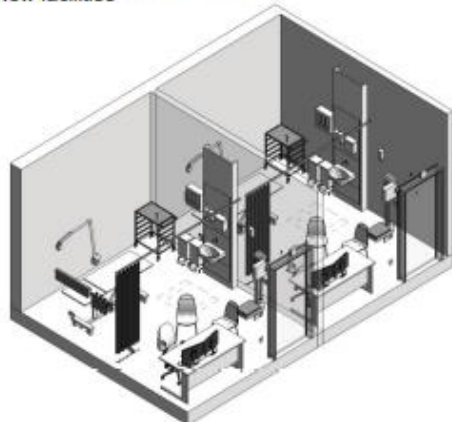


## Proposed new and refurbished buildings

Key

-  New building
-  Existing building
-  Building refurbished

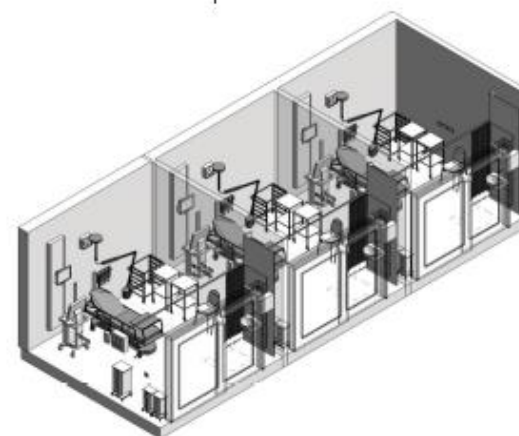
### Indicative 3D models New facilities



Model for New Consulting and Treatment rooms



New Diagnostic Centre



Relocated Urgent Treatment Centre





## Our next steps (after OBC submission)

NHP & Treasury  
approve OBC

Contractor  
appointed & full  
business case  
developed



Final funding & main  
build contract agreed

Enabling and ground works

Construction starts



New and refurbished  
hospital buildings open!



## Meanwhile ...

- being alert to other sources of funding where this might be possible for smaller elements of our overall programme
- ensuring current updates compliment our future redevelopment plans wherever possible
- ensure money is put to good use for the future as well as the present
- carrying out refurbishments when needed and not just waiting for the redevelopment funds
- keeping the conversation going with clinical staff to ensure that our designs continue to match plans based on great patient care
- engaging on new and emerging clinical models so that our decisions are informed by our patients



## Working collaboratively

- assessing, planning and delivering care together
- multidisciplinary meeting spaces for staff
- a model for how planned care can be delivered from a multi-specialty site
- offer health and wellbeing support for a wide range of long-term conditions
- helping patients manage their own care
- the service will identify people with multiple complex needs
- working with primary, community, mental health and social care partners to provide holistic packages of care



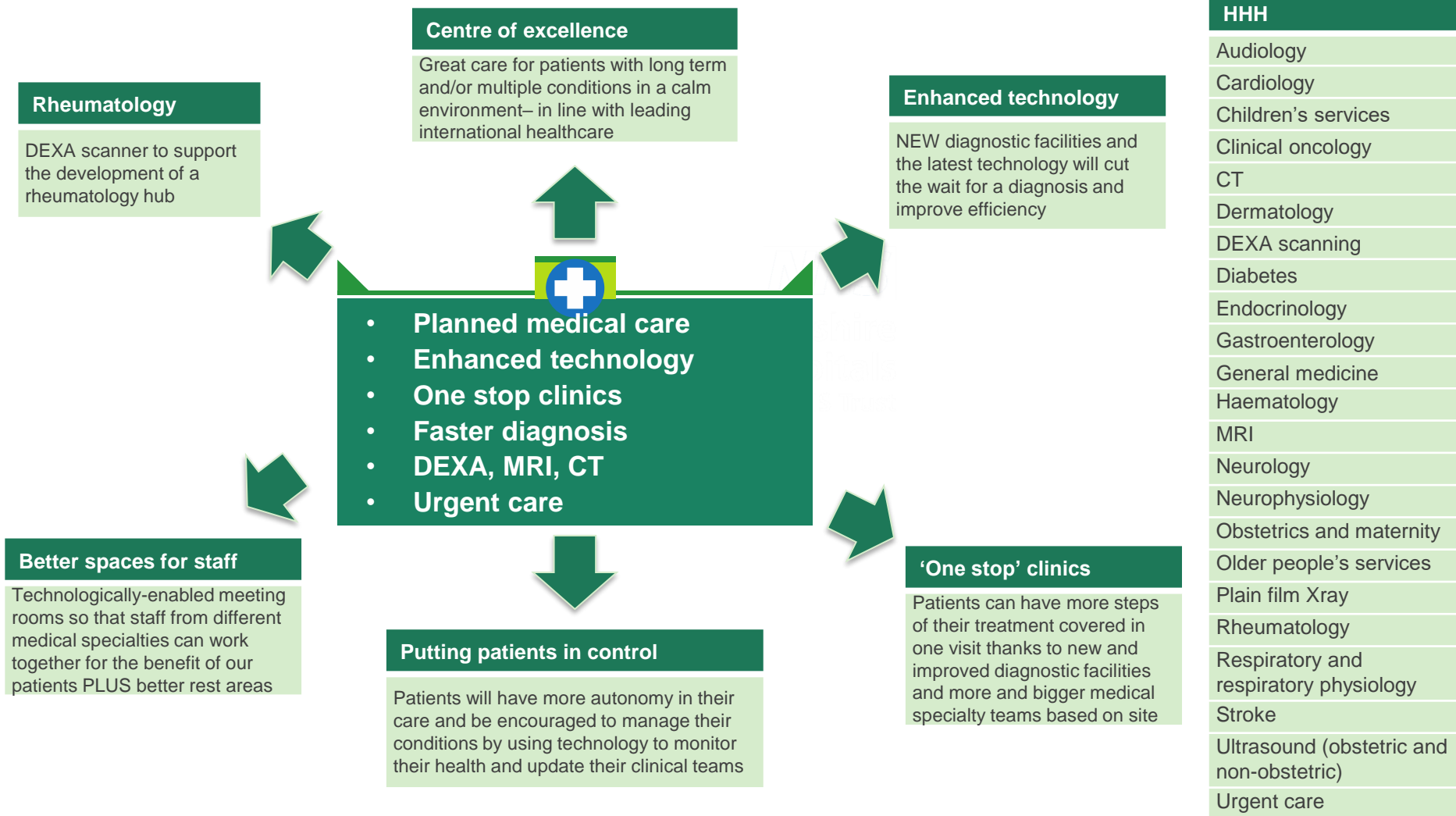


## A note on emergency care

- modern emergency care is also changing – nationally and internationally
- has become a highly specialised form of medicine needing the input of a wide range of specialties and facilities to support early assessment
- small satellite units at all three hospital sites no longer considered safe or sustainable
- important emergency department is linked to the rest of the hospital - vital departments such as intensive care and paediatrics
- 24-hour service with appropriately trained and expert staff
- access to all the resources necessary to deliver optimum and safe care
- specialists available for rapid diagnosis and treatment for emergency cases
- emergency care will continue to be based at Watford General

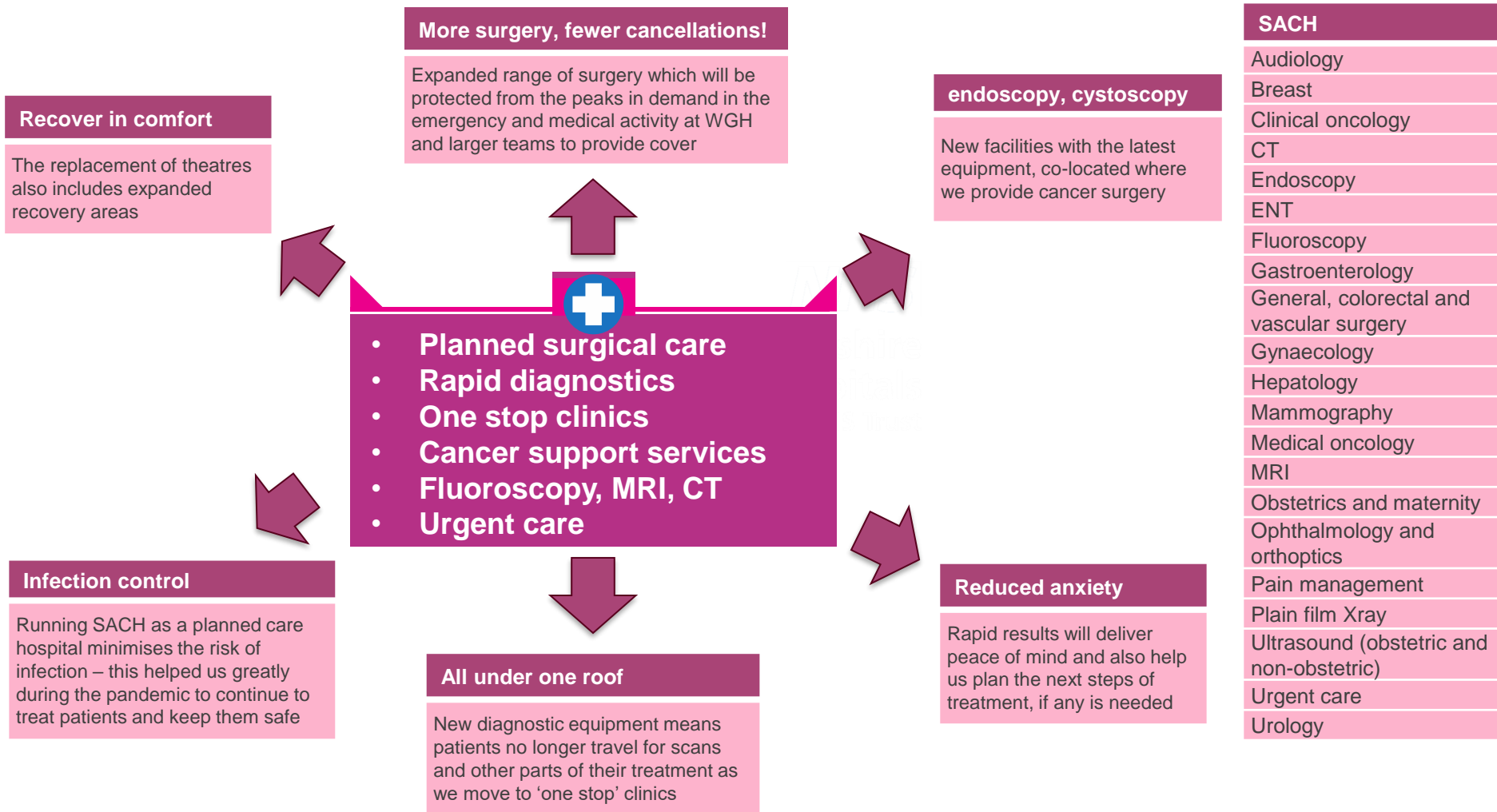


# Benefits for patients...HHH





# Benefits for patients...SACH





# Benefits for patients...WGH

## Sustainable and spacious

Our new building will be environmentally friendly and there will be green spaces and also more spacious patient areas

## Boosting birth experience

Our new women and children's building will have specially equipped rooms for antenatal, labour and postnatal care – meaning mum and baby can stay put

## Expanded emergency

Bigger unit, better equipment and more assessment space so that specialists come to patients and not vice-versa

## Fighting infection

A high ratio of single rooms and the latest design and ventilation will be used to keep us all protected from infection

## Family planning

Paediatric services will be in the main building with child-friendly design

## Safe and sensible

We will reorganise how services are located, e.g. all acute services in the same building – making sure the right care is on hand when needed

- Up to 90% new buildings
- Expanded emergency care
- Technology-enabled site & services
- Complex diagnostics
- Vastly improved patient & staff areas
- Services organised better together

## WGH

Audiology  
Cardiac MRI  
Cardiology  
Children's services  
Clinical oncology  
CT  
Cystoscopy  
Dermatology  
Diabetes  
Emergency  
Endocrinology  
Endoscopy (urgent)  
ENT  
Gastroenterology  
General medicine  
General colorectal and vascular surgery  
Gynaecology  
Gynaecology oncology  
Fluoroscopy  
Haematology  
Hepatology  
Medical oncology  
MRI  
Neurophysiology  
Nuclear medicine  
Obstetrics and maternity  
Older people's services  
Ophthalmology and orthoptics  
Oral surgery and dental  
Pain management  
Plain film Xray  
Rheumatology  
Respiratory and respiratory physiology  
Stroke  
TIA (transient ischaemic attack – or 'mini stroke')  
Ultrasound (obstetric and non-obstetric)  
Upper gastrointestinal surgery  
Urgent care  
Urology



**NHS**

West Hertfordshire  
Teaching Hospitals  
NHS Trust

# Questions





## Further questions?

*NHS*

**[westherts.redevelopment@nhs.net](mailto:westherts.redevelopment@nhs.net)**



## Subscribe to our newsletter, **Blueprint**



Our monthly newsletter **Blueprint** is designed to keep local residents, patients and our health and social care partners up-to-date on our hospital redevelopment plans as well as news from across the trust.

If you would like to sign up to the newsletter, please email [westherts.redevelopment@nhs.net](mailto:westherts.redevelopment@nhs.net)

You can view previous editions of the newsletter on our website: <https://www.westhertshospitals.nhs.uk/about/redevelopment/furtherinformation.asp>



## Tour

- please stay with the group
- wear face covering if possible





*Thank you*

[westherts.redevelopment@nhs.net](mailto:westherts.redevelopment@nhs.net)

Find us online @WestHertsNHS



[www.westhertshospitals.nhs.uk](http://www.westhertshospitals.nhs.uk)