

## Urgent & Emergency Care 2019/20



**160,707**  
A&E  
attendances

150,818 attended A&E, UTC & MIU  
(2018/19)



**32,974**  
Ambulance  
arrivals

31,263 patients brought to A&E by East  
of England Ambulance Service Trust  
(2018/19)



**81.1%** A&E  
patients seen  
within 4 hours

National target: 95% of A&E patients to  
be seen within 4 hours (2018/19 80.9%)

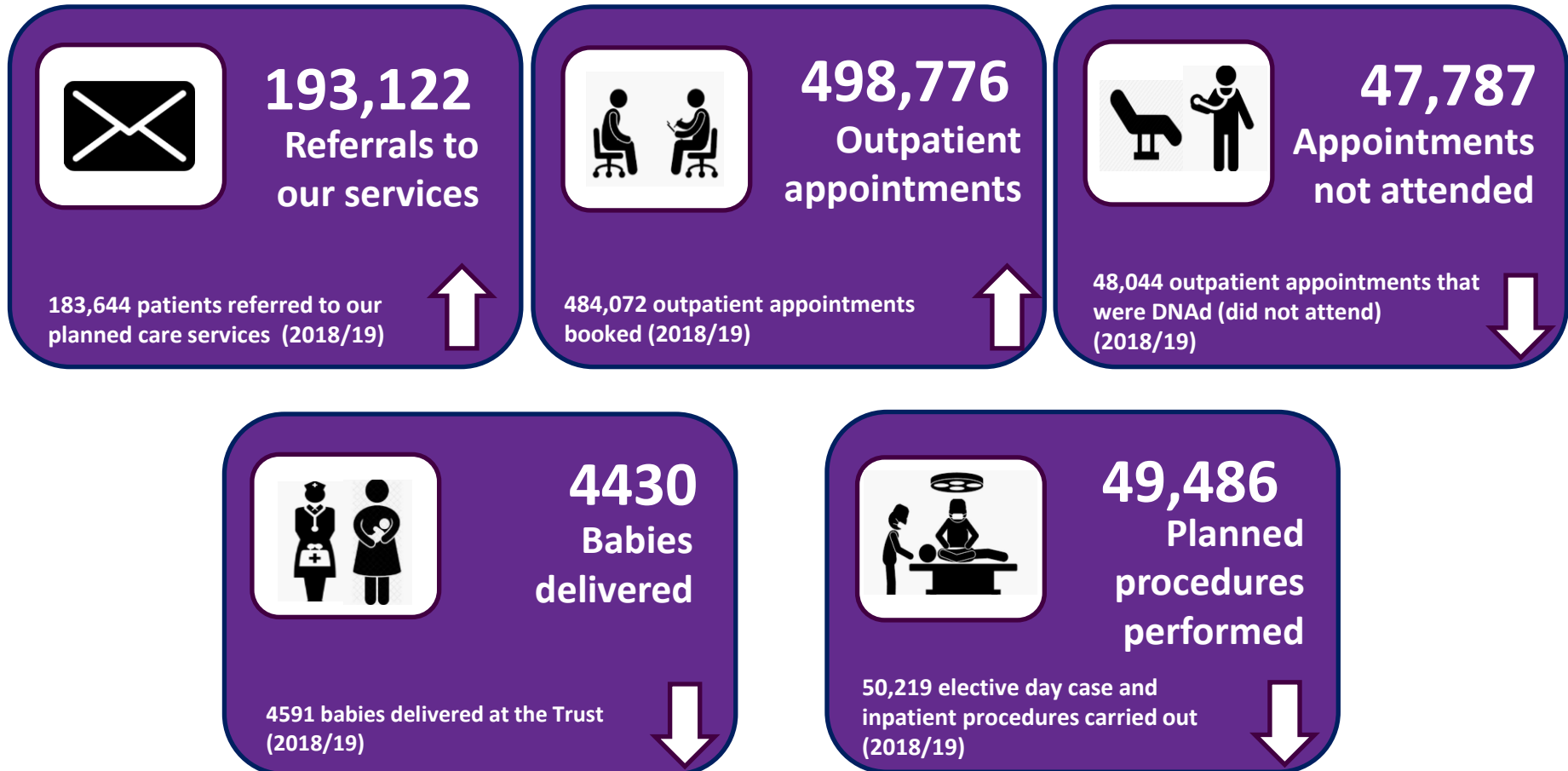


**48,122**  
Emergency  
admissions

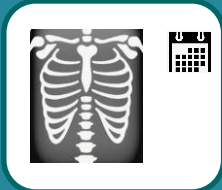
42,149 patients admitted for urgent  
unplanned care (2018/19)



## Planned Elective Care 2019/20



## Planned Care Performance 2019/20



**99.1%**  
Diagnostic  
tests within  
6 weeks

National target: 99% of Diagnostic tests performed within 6 weeks of referral (2018/19 99.6%)



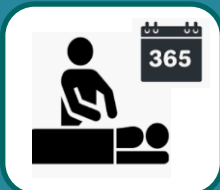
**94.2%**  
Suspected cancer  
referrals seen  
within 14 days

National target: Patients seen within 14 days of referral (2018/19 93.3%)



**82%** Cancer  
treatments  
within 62 days

National target: 85% of patients to be treated for cancer within 62 days of referral (2018/19 82.3%)



**3**  
52+ week waits  
for treatment

National target: Patients waiting for planned treatment 52 or longer for treatment (July 2018 124)



**85.4%**  
Treated within  
18 weeks

National target: 92% of patients to be treated in less than 18 weeks from referral (RTT) (2018/19 83.7%)

