



Sally Tucker
Chief Operating Officer

Our Chief Operating Officer

Planned care, emergency care and recovery

2021/22 has been another challenging year for urgent and emergency care which reflects the national picture. We are working closely with our health and social care partners to improve our elective care and activity recovery.

Urgent and emergency care 2021/22

Demand for urgent care services is now higher than pre COVID

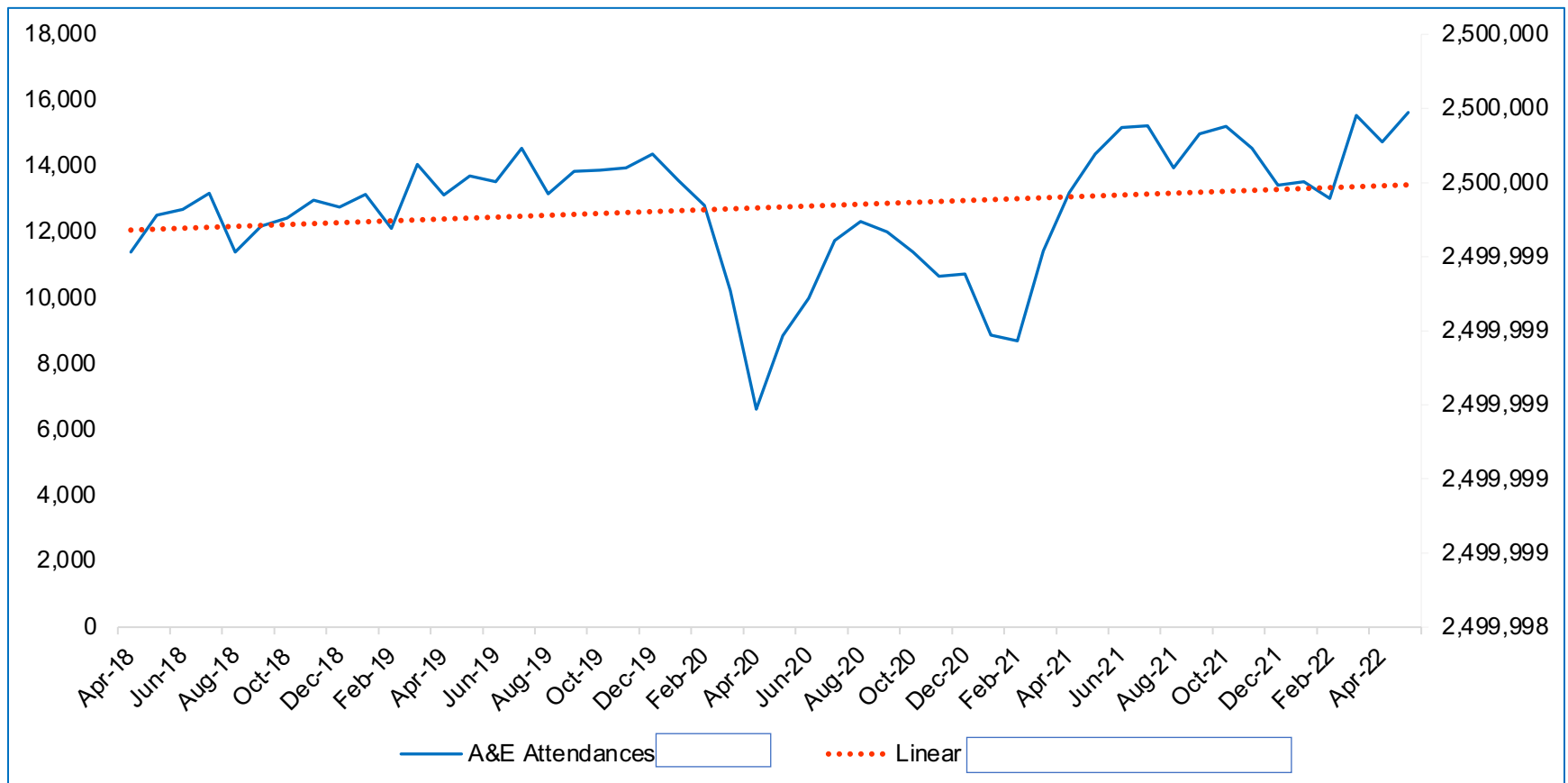


266* COVID +ve patients (*weekly average) being cared for in hospital in 2021/22



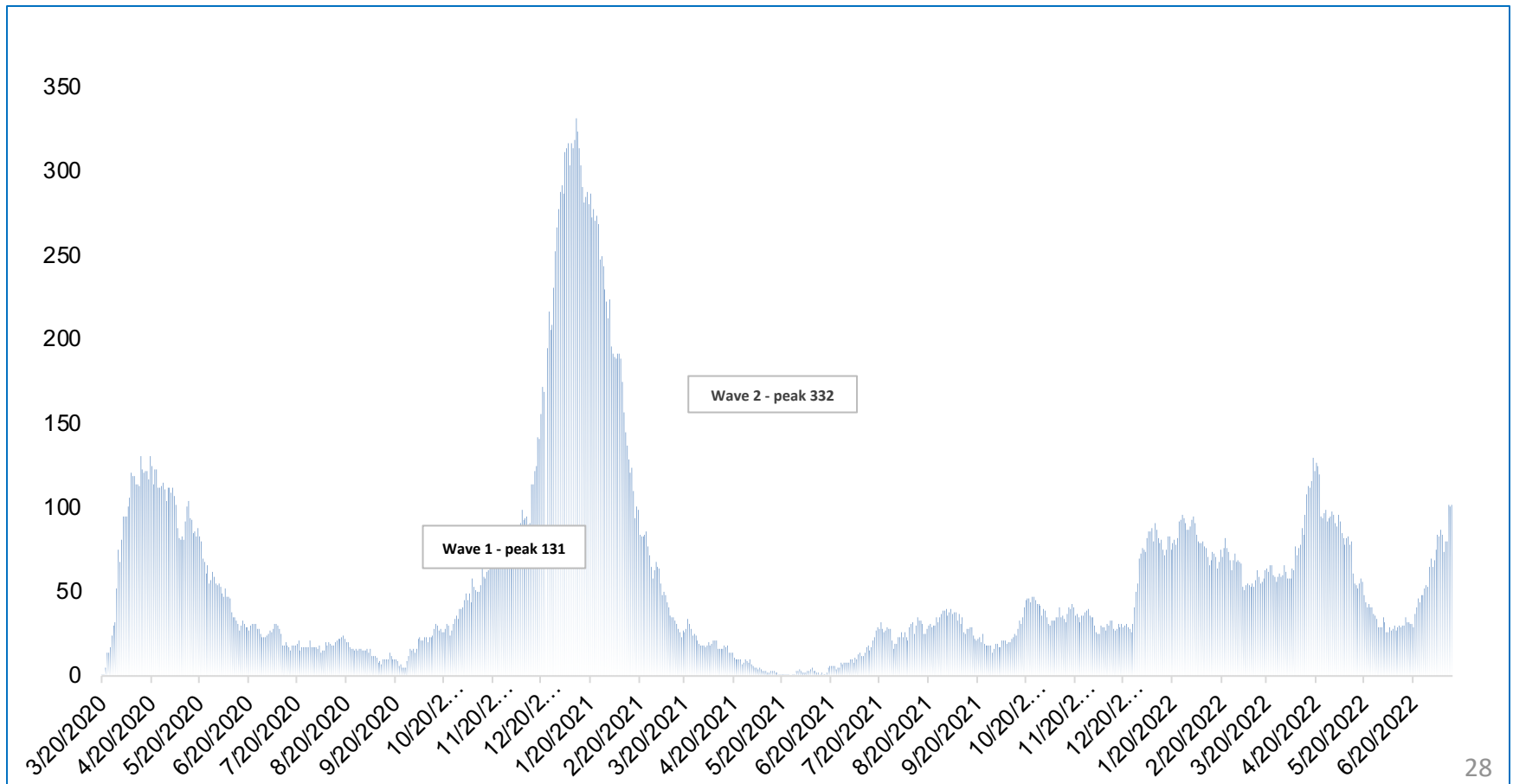
A&E attendances

Time series - 2018/19 to 2021/22

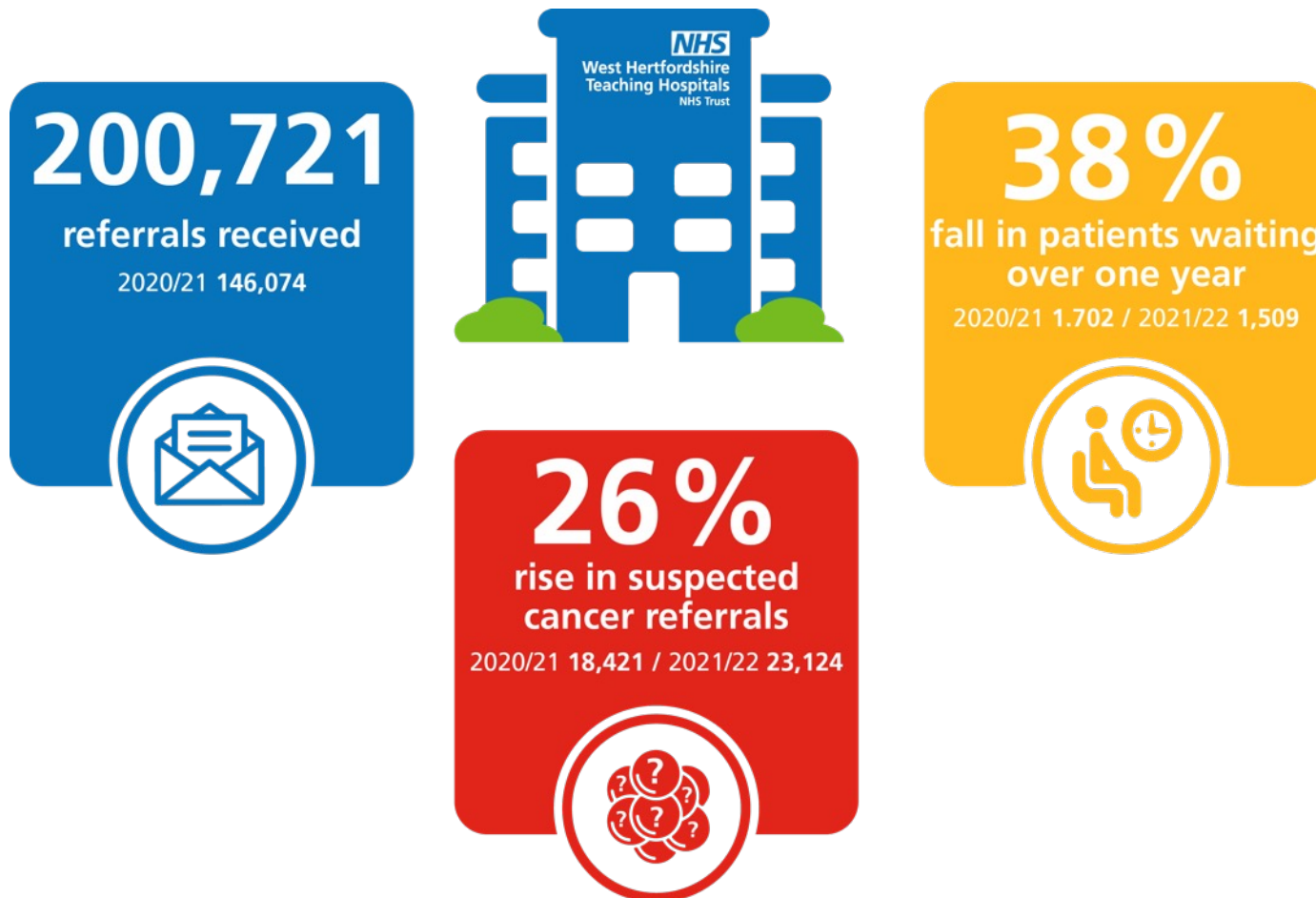


General beds occupied by COVID +ve patients

Time series – March 2019 to June 2022



Planned, elective care 2021/22



104 week (2 year) RTT (Referral to Treatment) waits

